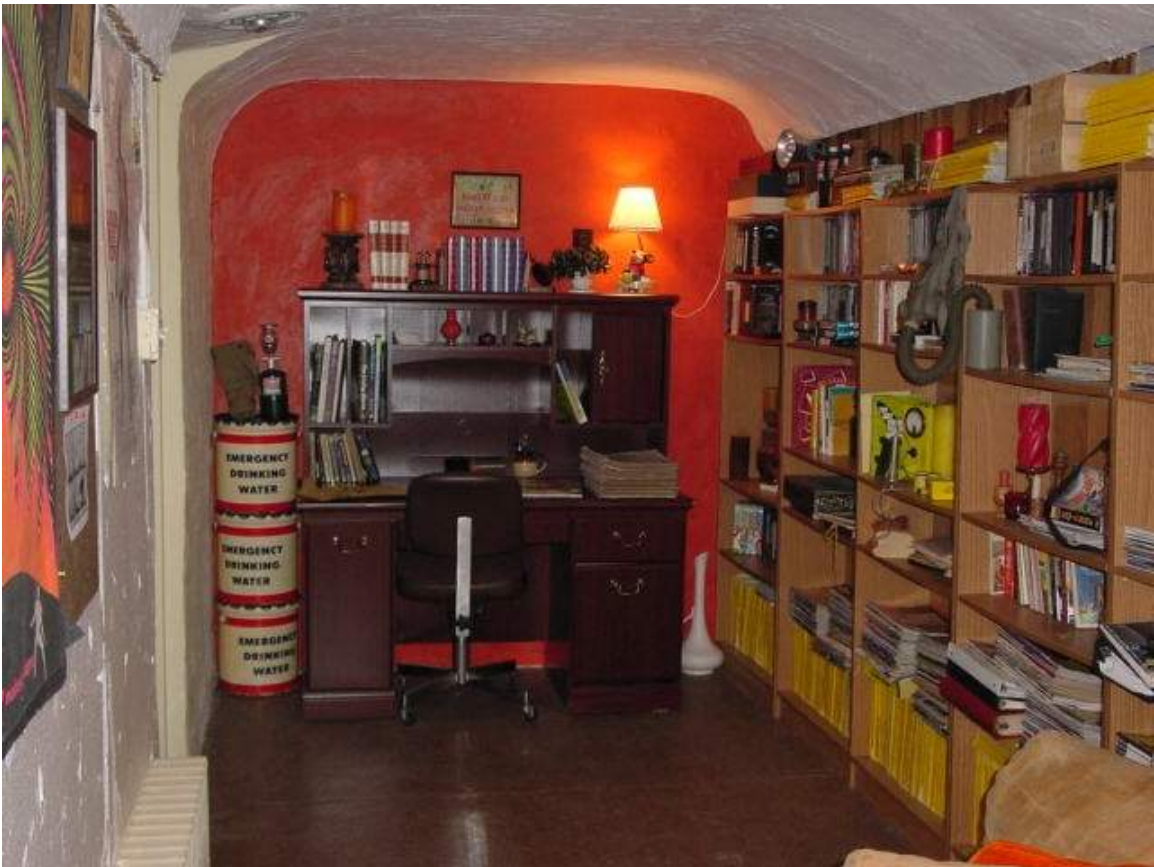


Pleasant Hills, Pa.
Home of the first home bomb shelter or fallout shelter.
Built in 1959.

Pictures shown how it is being used today.





Mr. Obidzinski, President of the Obie Construction Company, is a well known veteran in the home building industry, and has been building fine quality homes since 1922 when he was released from the U. S. Navy as Chief Carpenters Mate.

The plans for the Obie shelter were approved by the Civil Defense before construction began. In calling attention to his shelter home, Mr. Obidzinski noted that Russia is currently embarking on a program to provide its people with shelters.

The Obie shelter home was built not only with safety in mind, but for comfortable living for you and your family for many years to come. Concrete floors, metal doors, and steel roof serve as extra fireproofing. Even if the cold war never turns hot, Mr. Obidzinski believes his shelter will offer protection against tornadoes, hurricanes and other weather rampages. He knows that this shelter will not survive a direct hit; that outside the immediate target area fire and powerful shock waves will reduce most homes to rubble. But without an underground shelter that can stand against this force, people will be exposed to radiation and death.

The emergency shelter can also be added to any existing home depending on lot size and zoning. For further details on building an emergency shelter or a custom quality home--

Call- OBIE CONSTRUCTION CO.
2512 Burham St., Pittsburgh 3, Pa.
HE. 1-5794

Plastering by - -

GEOFFREY S. DONOGHUE
 1164 S. Ave. - CH. 1-3055

Painting by - -

JOSEPH C. REICH SONS
 TU. 2-2712

Finished Hardware by - -

SMITH-WOODWELL, INC.

Flue Pipes by - -

JOHNS-MANVILLE

Lighting Fixtures by - -

COBAR LIGHTING
 AT. 1-0506

Tessera Corlon by - -

ARMSTRONG CORK CO.

Plumbing Fixtures by - -

RHEEM-RICHMOND

Heating Controls by - -

WHITE-RODGERS

Distributed by - -

**WATERWAY PLUMBING
 SUPPLY, INC.**

Wall-Tex by - -

**PEERLESS WALLPAPER &
 PAINT CO. GR. 1-4626**

Lumber & Mill Work by - -

HAZELWOOD LUMBER CO.
 2nd Ave. & Glen Caladh
 HA. 1-0300

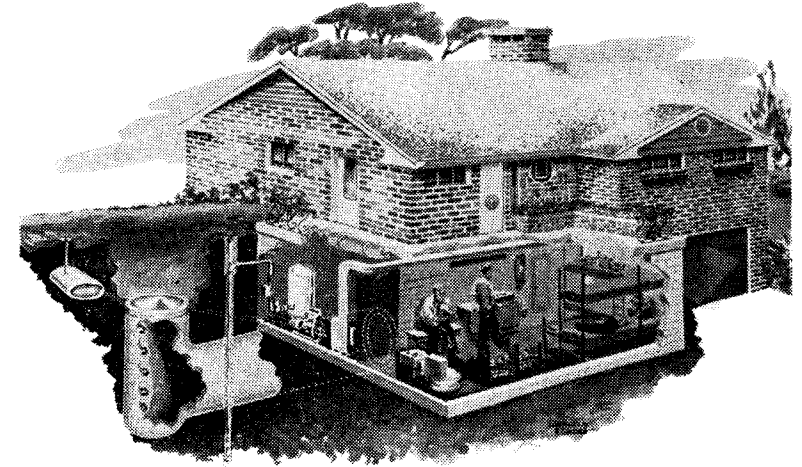
Insulation done by - -

WERNER'S INSULATING CO.
 TU. 2-3727

OBIE CONSTRUCTION

Proudly Announces

THE NATION'S FIRST BOMB SHELTER HOME

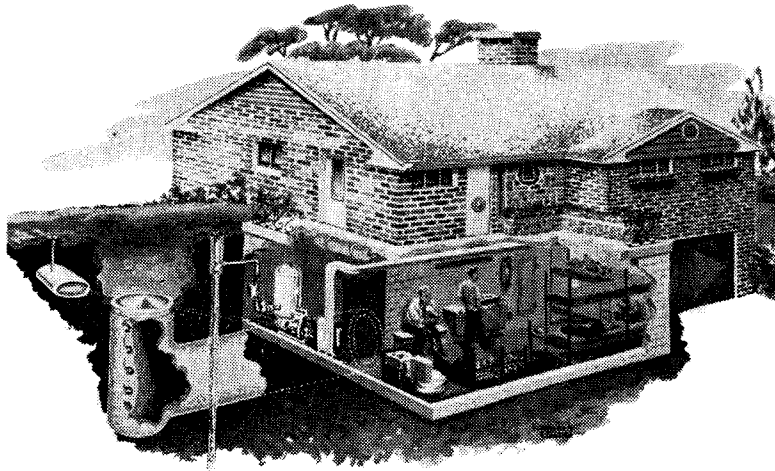


350 Mowry Dr., Pleasant Hills, Pa.

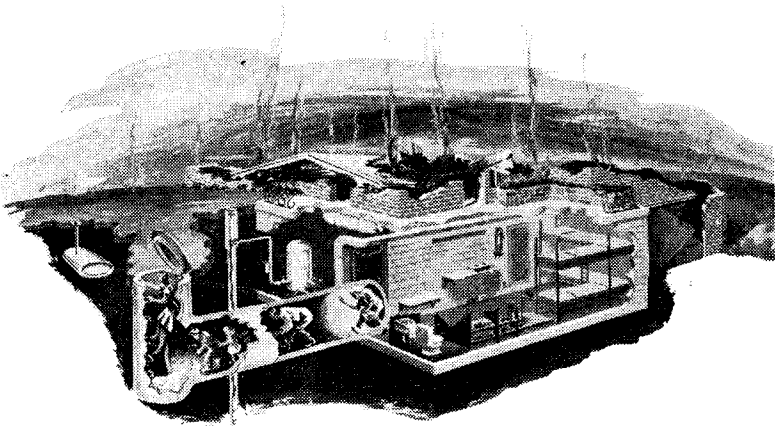
Featuring:

- ★ A fully equipped, underground, integral shelter to offer maximum protection against nuclear attack, hurricanes, tornadoes and weather rampages.
- ★ J & L Junior Beams used in a reinforced concrete flooring system for greater strength.
- ★ Self ventilating metal roofing shingles.
- ★ J & L spiral "Ardox" nails for greater holding power.
- ★ Hot water heating system by Burnham.
- ★ Westinghouse Electric kitchen.
- ★ Pre-cast concrete escape tunnel by American Marietta Co.

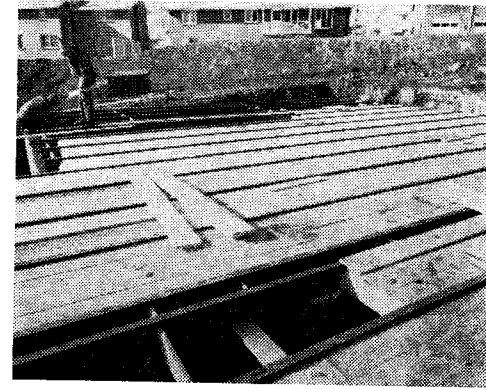
The result of nearly ten years of development, the Obie bomb shelter home is designed to safeguard your family in the event of war or destructive storms.



A modern, comfortable home. Drawing shows a cut away view of the nation's first integral shelter.



The damage is done---but this family has survived in comfort until the time it is safe to leave the shelter by the built-in escape tunnel.



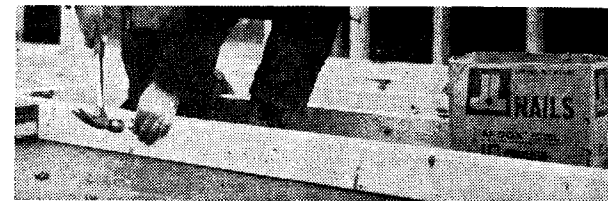
The reinforced concrete flooring system is supported by J & L Junior Beams shown here in early construction, some being readied with wood flooring forms that are removed after concrete sets.



Builder Obidzinski positions precast concrete escape tunnel, manufactured by Marietta to comply with Civil Defense specifications calling for an emergency exit.



Self ventilating metal roofing shingles are installed to give a lifetime roof. McDowell Mfg. Co. fabricated the roof from J & L galvanized 28 gage steel. Gateway Steel is the distributor. Sprayed roofing by Cover-All, Inc.



A special Ardox nail, manufactured by J & L is used throughout the wooden framing members of the house. Ardox nails have 200 per cent greater holding power to resist raising and loosening.